

## Benefits

- Complies with RD performance targets.
- Suitable for pre-cast and solid concrete floors
- Low water absorption eliminates the need for a vapour control layer
- Minimal change to traditional floor and ceiling construction
- Accepted by NHBC for ADE compliance.
- Highly resistant to creeping

## Description

TVS RESi Foam is a lightweight flexible resilient product it is chemically inert with a crosslinked closed-cell structure that gives remarkable mechanical and physical properties compared with other cellular plastics 100% recycled & recyclable material.

## Physical Information

- Thickness: 10mm (other thicknesses available on request)
- Roll Length: 50mtr
- Roll Width: 2mtr

**Tensile Strength (BS 4443) : 180 kPa**

**Compressive Strength (ASTM 1056)**

**at 25% : 42 kPa**  
**at 50% : 110 kPa**

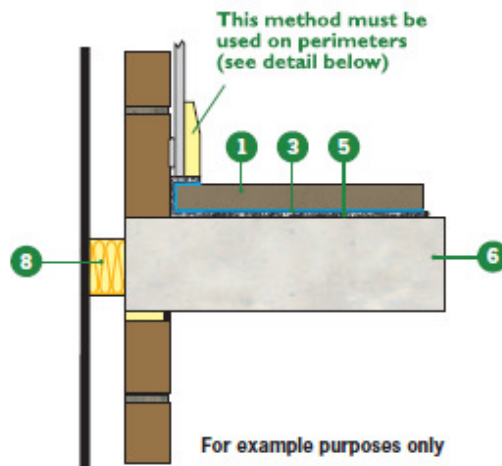
**Compression Set (50%Compression/70 hours/23oC)**  
**after 24 hours recovery : 36%**  
**after 72 hours recovery : 20%**

**Thermal Conductivity : 0.036 W/mK**

**Water Absorption (after 6 weeks)**  
**Volume change : + 3%**

## Data

19dB Improvement



- 1 65mm sand cement screed or minimum 40mm proprietary screed
- 3 Optional waterproof membrane
- 5 TVS RESi Foam
- 6 Concrete Slab / Precast floor plank min 300kg/m<sup>3</sup>
- 8 Acoustic cavity closure
- 9 TVS RESi Tape

