

# Celotex reaching new heights

**Posted:** 27th August 2014

**NEW PRODUCT:** Celotex RS5000 is the latest addition to the 5000 series and has been specifically designed for rainscreen cladding applications. Successfully tested to meet the criteria in BR 135, RS5000 can be used in buildings above 18 metres in height – a first for PIR.

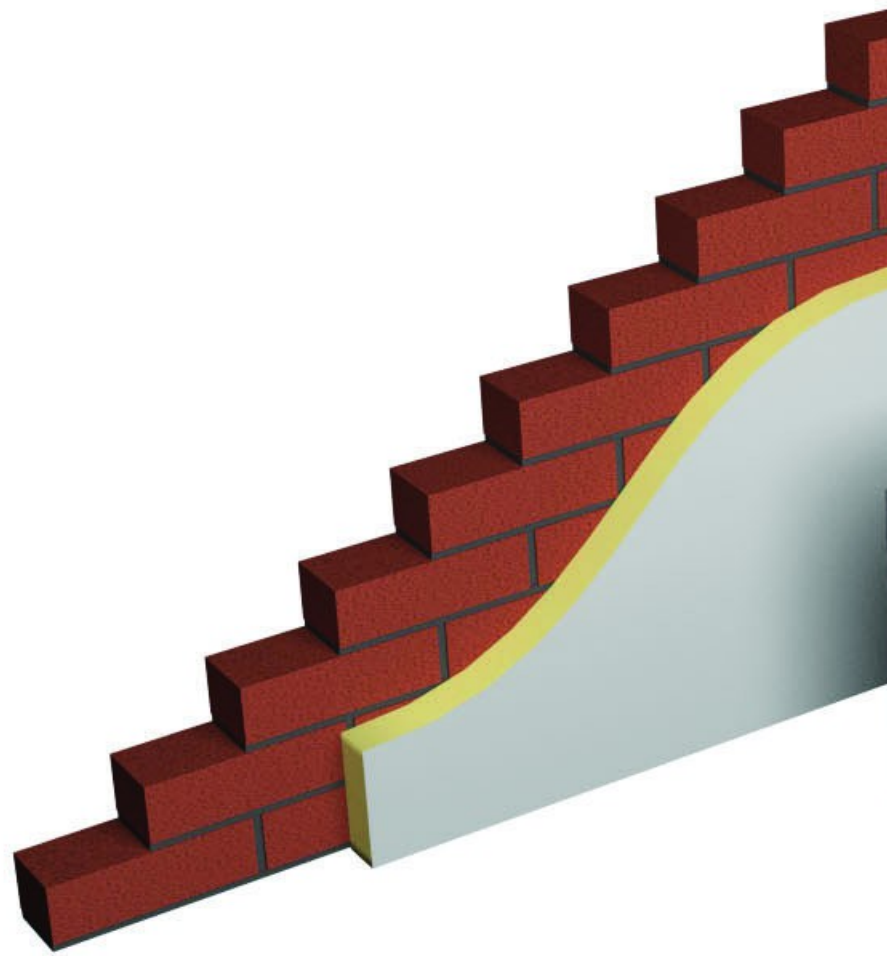
- Board size: 1200 x 2400mm
- Thickness : 50-150mm
- Lambda: 0.021 W/mK
- Facer: Super low emissivity textured aluminium foil facings

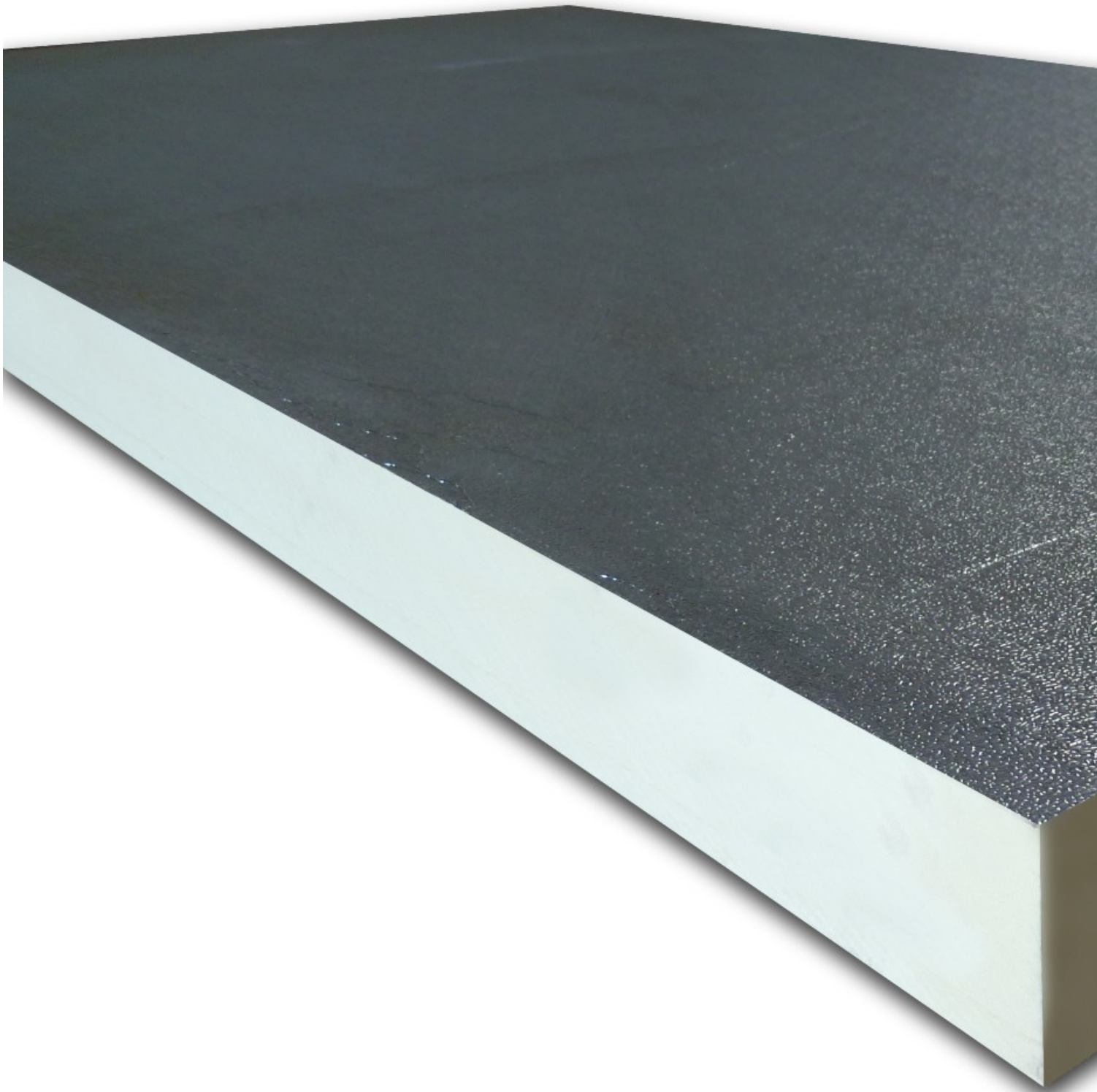
With Celotex RS5000, you are specifying an insulation board that:

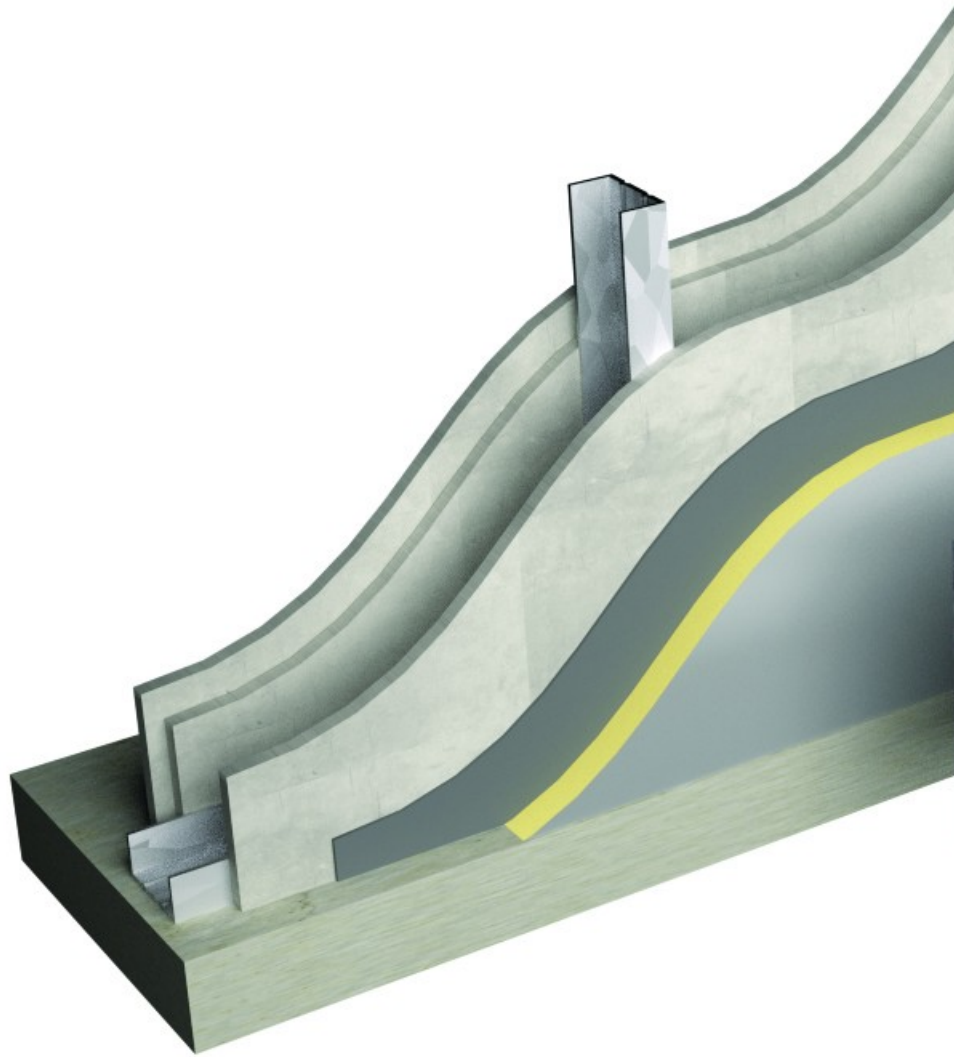
- Has been tested to BS 8414-2:2005, meets the requirements in BR 135 and the first PIR insulation suitable for rainscreen cladding applications above 18 metres in height
- Features Class O fire performance
- Has a super low lambda value of 0.021 W/mK
- Achieves an 'A+' rating when compared to the BRE Green Guide
- Designed to enhance the thermal performance of insulated façade systems
- Can be used as sheathing to warm steel frame constructions or fixed directly to masonry for overcladding applications.

[To find out more about this product please click here.](#) [1]

[To find your closest branch click here.](#) [2]







[Go back to the News](#) [3]

---

**Source URL:** <https://www.encon.co.uk/news/2014/08/27/celotex-reaching-new-heights>

**Links:**

[1] <http://www.encon.co.uk/products/view/2017/celotex-rs5000-25k>

[2] <http://www.encon.co.uk/branches>

[3] <https://www.encon.co.uk/news>