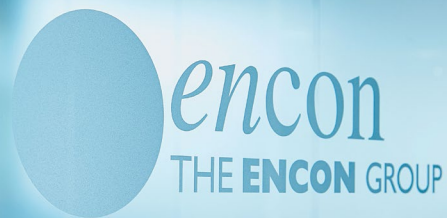




## Construction Products Overview

Concrete & Reinforcement Accessories  
Construction Chemicals | Geotechnical  
Groundworking Products | Waterproofing  
Masonry Components

**The Distributor of Choice**



Encon Construction Products is a specialist distribution division of The Encon Group - the UK's No 1 independent distributor of building and project solutions. Other specialist distribution divisions in the Group include Encon Insulation, Nevill Long Interior Systems and Encon Technical Solutions. Our Group also benefits from dedicated teams in passive fire protection and infrastructure.

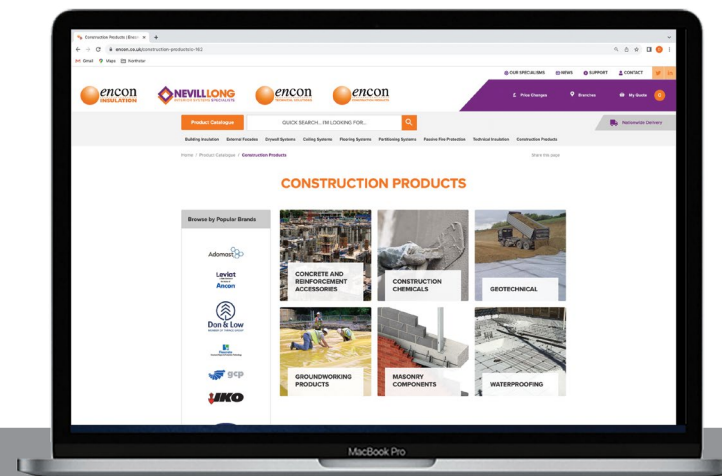
Through our national branch network, Encon Construction Products offers an extensive choice of products and systems from market leading brands that span six key areas:

**Concrete & Reinforcement Accessories, Construction Chemicals, Geotechnical, Groundworking Products, Masonry Components and Waterproofing.**

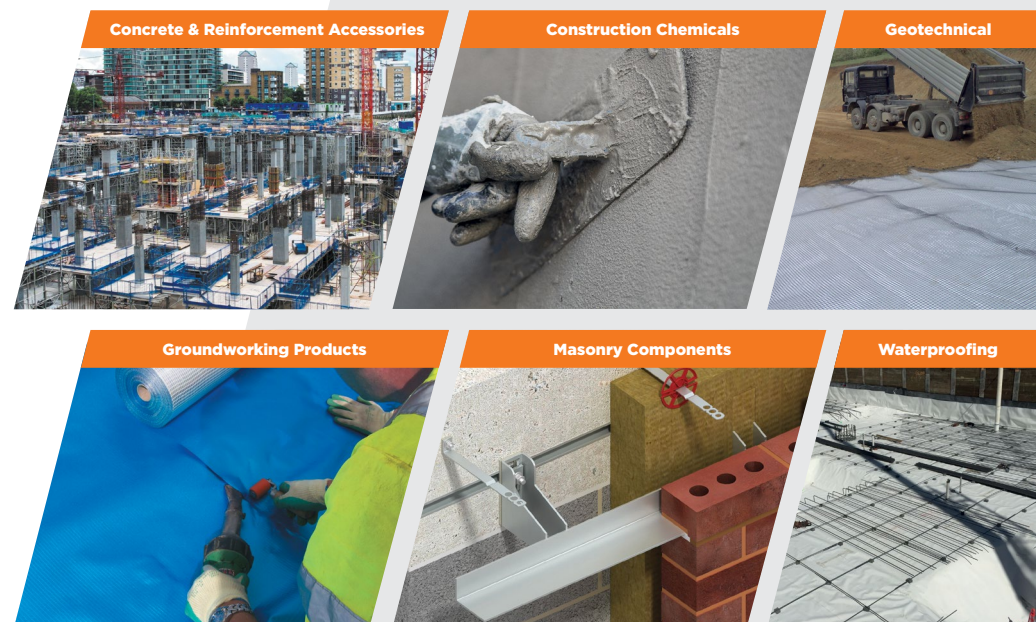
Working with market leading brands



and many more...

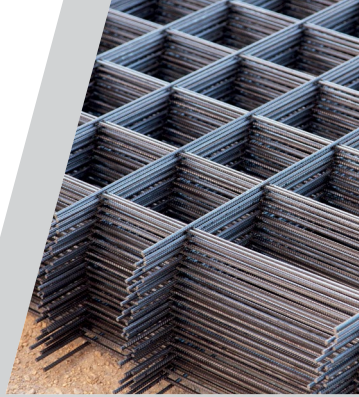


For detailed product information and to view the complete range, visit our website or download our dedicated Product Guide at [www.encon.co.uk](http://www.encon.co.uk)



## Concrete & Reinforcement Accessories

A full product range for concrete and groundwork contractors. From tie bars and ancillaries to numerous types of spacers and specialist products for structural concrete such as shear load connectors, couplers and balcony connectors.



## Construction Chemicals

Primarily for use with concrete and includes a range for other applications too. High quality resin anchors for formwork and permanent heavy duty fixing, polysulphide joint sealants for concrete movement joints, cleaning products for masonry, and retarders and surface hardeners for concrete. We also supply a wide range of solutions for builders' merchants.



## Geotechnical

A comprehensive range of geotechnical engineering solutions, ensuring that the natural environment is correctly prepared for your projects. Products include woven and permeable non woven geotextiles, geogrids, coastal erosion control and environmental protection.



## Groundworking Products

A full range specifically for groundwork preparation, including gas protection and damp proof membranes, associated ancillaries and construction grout. We also stock in situ sacrificial formwork products such as Beamform and Hyrib and insulation for floor slabs.



## Masonry Components

Every brickwork and masonry ancillary you will ever need, including bespoke masonry support and windpost systems, channel, brickwork reinforcement, wall ties and restraints, high performance damp proof course systems (DPCs), ventilation, firestopping and insulation.



## Waterproofing

An outstanding choice of pre and post applied sheet membrane systems, as well as liquid waterproofing and tanking products and all the required ancillaries, including tapes, adhesives and protection boards.



## Why choose Encon?

### Trusted Brands, from Stock

Our strong relationships with market leading brands across all our divisions ensure customers benefit from wide stock availability and reassurance of supply through our 23 branches. This means all the solutions you need, from one main supplier.

### Unrivalled Service, Nationwide

Our customers are our number one priority, and we aim to make it easy for you. Our nationwide coverage means there is always an Encon branch within reach to support your project needs. Our fully stocked warehouses and yards, convenient collection service, dedicated vehicle fleet and flexible deliveries ensure you get all the products you need, on time, to specification and in the volumes you need. Deliveries include split loads, next day or just in time.

### Expert Teams

Our trained product champions and technical experts provide customers with specialist and in depth knowledge and experience so you can confidently make the right choice for your building projects.

### Quality & Safety Assured

Health and safety is always top of mind, in our workplace, on site and on the road. Our HSEQ team continually strives to oversee, implement and improve health and safety procedures throughout our business. We are fully accredited to ISO 9001, ISO 14001 and ISO 45001 and carefully consider the social and environmental impacts of our business.



## Standards & Accreditations



## Solutions for Builders' Merchants

As an integral part of your supply chain, our specialist Encon Construction Products branches and experienced teams provide all the products and support merchants need for ultimate convenience.

### Tailored Range

Across our six main product categories, key solutions for merchants are listed below. View the complete range in our online [Product Catalogue](#).

#### Construction Products Category

##### Concrete & Reinforcement Accessories

*Reinforcement Mesh, Dowel Bars, Concrete Spacers, Curing Agents and more.*

##### Construction Chemicals

*A full range of Chemicals including Cementitious Grouts, Technical Mortars and Sealants. **Ancillaries:** Primers, Tapes, Adhesives, Tools and Accessories.*

##### Geotechnical

**Geotextiles and Geogrids:** TenCate Polyfelt TS1000 4.5 x 100m, TenCate Miragrid GX 30/30. **Erosion Control:** TERRAM Geocell.

##### Groundworking Products

*Damp Proof Membranes and Vapour Barriers. **Ancillaries:** Jointing Tapes, Vapour Tapes and Sealants.*

##### Masonry Components

*Zedex DPC and Systems, Wall Ties, Cramps and Restraint Fixings. Windposts and Masonry Support. **Ancillaries:** Jointing Tapes, Joint Fillers, Adhesives and Sealants.*

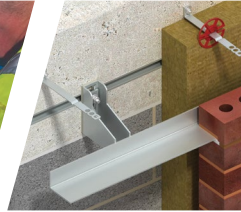
##### Waterproofing

*GCP Waterproofing Systems, Visqueen Self-adhesive Membrane, Waterstops. **Ancillaries:** Primers, Detailing Strips.*

### Flexible Service

Encon's nationwide coverage, dedicated vehicle fleet, bespoke deliveries, and branch trade counters underpin our flexible service:

- Convenient & efficient deliveries
- Small or split loads
- Fast-track collections
- Our delivery service includes:
  - Direct to your branch or to site
  - Next day
  - Just in time



## Encon Branch Network

Our nationwide network of 23 branches and vast vehicle fleet ensures products are delivered on time and in full, providing customers what they need, when they need it.

All our branches are able to supply an extensive choice of solutions including construction products, building insulation, interior systems, passive fire protection and technical insulation. Our network also includes specialist branches, and among them are 12 Encon Construction Products branches with expert teams to support individual project needs. See below.



View our full list  
of branches and  
their specialisms.

### Specialist Encon Construction Products Branches

#### Bristol

Tel: 0117 980 2100  
email: [bristol@encon.co.uk](mailto:bristol@encon.co.uk)

#### Cardiff

Tel: 02920 895 040  
email: [cardiff@encon.co.uk](mailto:cardiff@encon.co.uk)

#### Dundee

Tel: 01382 610 040  
email: [dundee@encon.co.uk](mailto:dundee@encon.co.uk)

#### East London

Tel: 0208 526 8440  
email: [eastlondon@encon.co.uk](mailto:eastlondon@encon.co.uk)

#### Fareham

Tel: 01329 230 555  
email: [fareham@encon.co.uk](mailto:fareham@encon.co.uk)

#### Glasgow

Tel: 0141 641 0011  
email: [glasgow@encon.co.uk](mailto:glasgow@encon.co.uk)

#### Leeds

Tel: 0113 220 7000  
email: [leeds@encon.co.uk](mailto:leeds@encon.co.uk)

#### Maidstone

Tel: 01622 713 400  
email: [maidstone@encon.co.uk](mailto:maidstone@encon.co.uk)

#### North West

Tel: 01257 248 220  
email: [northwest@encon.co.uk](mailto:northwest@encon.co.uk)

#### Nottingham

Tel: 0115 978 0040  
email: [nottingham@encon.co.uk](mailto:nottingham@encon.co.uk)

#### Plymouth

Tel: 01752 333 720  
email: [plymouth@encon.co.uk](mailto:plymouth@encon.co.uk)

#### West London

(Specialist Masonry Centre)  
Tel: 0208 831 1530  
email: [westlondon@encon.co.uk](mailto:westlondon@encon.co.uk)

#### Wetherby (Head Office)

Tel: 01937 524 200  
email: [info@encon.co.uk](mailto:info@encon.co.uk)